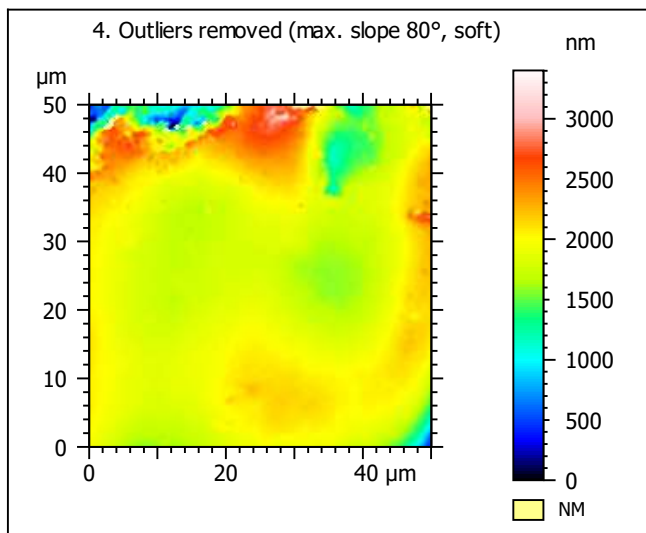
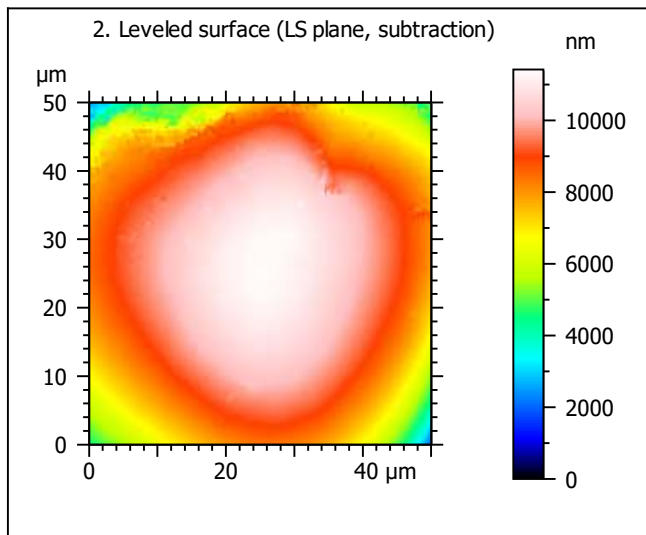
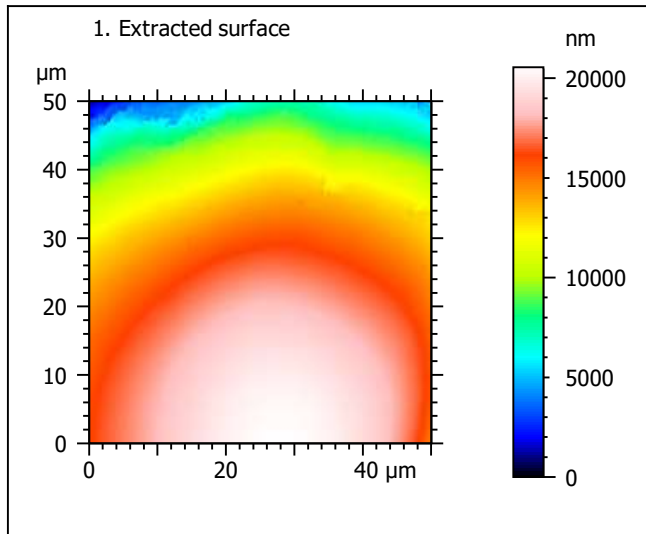
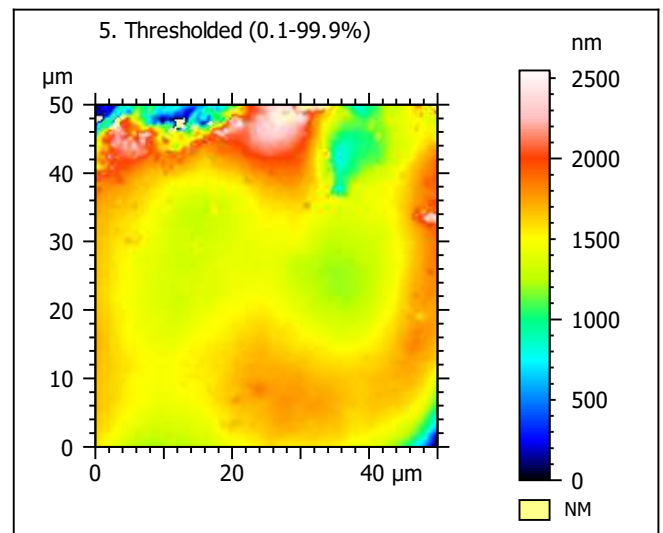
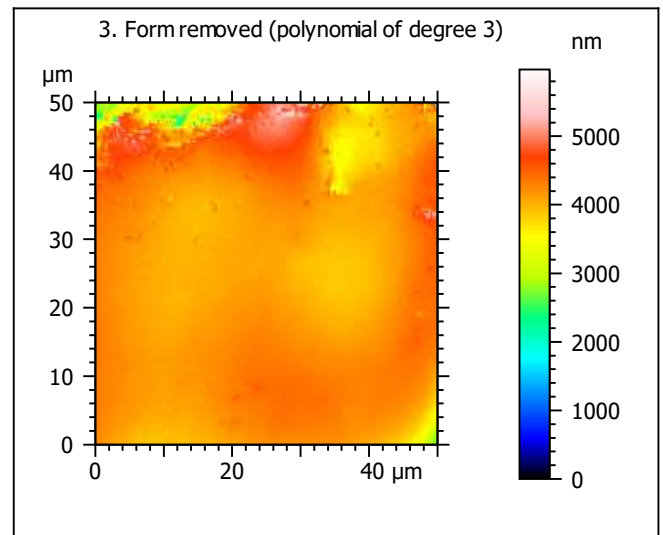


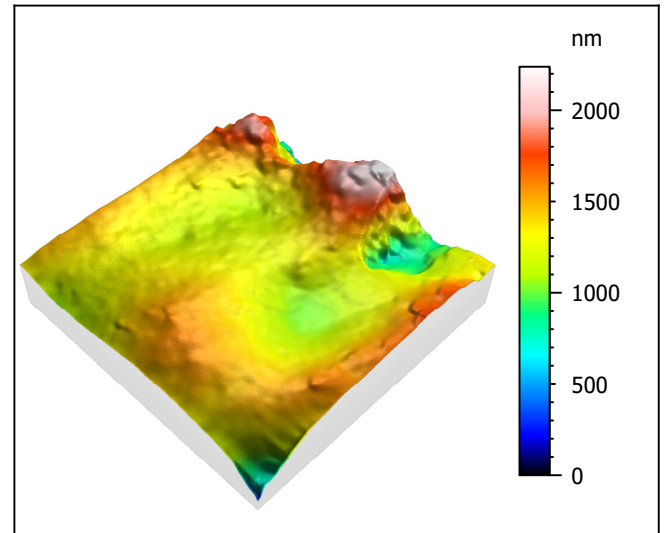
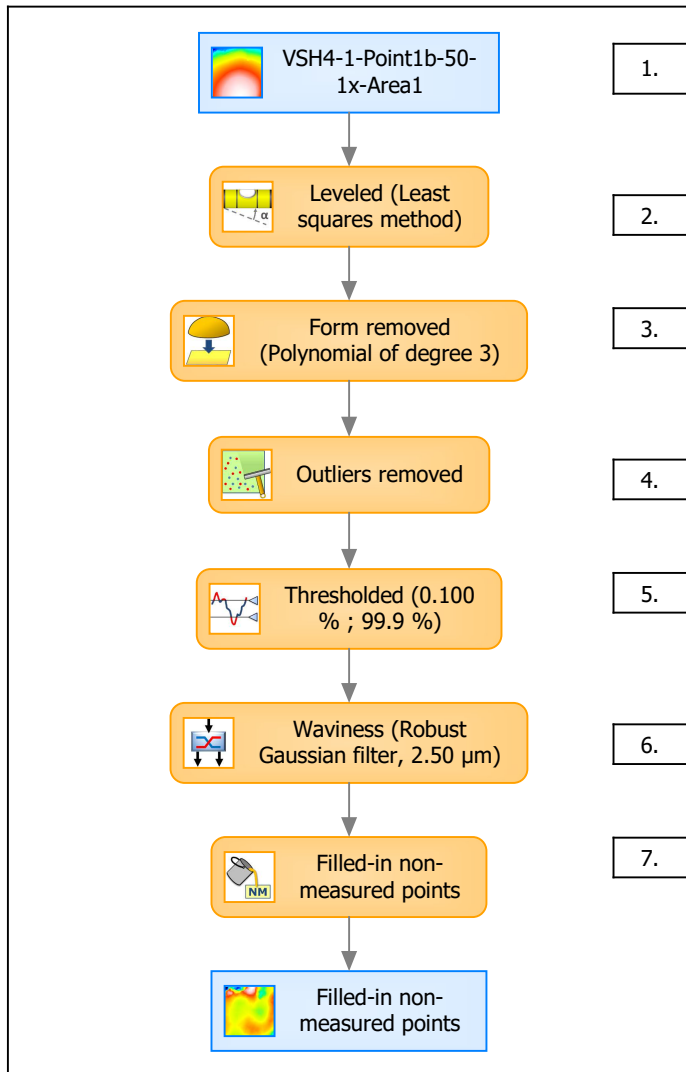
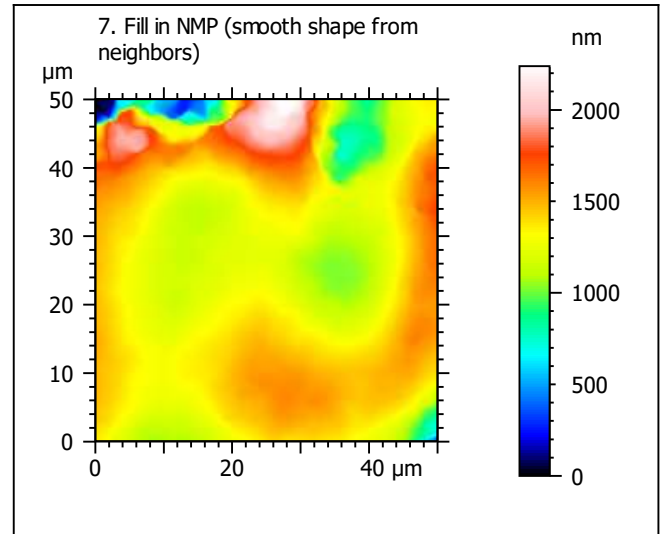
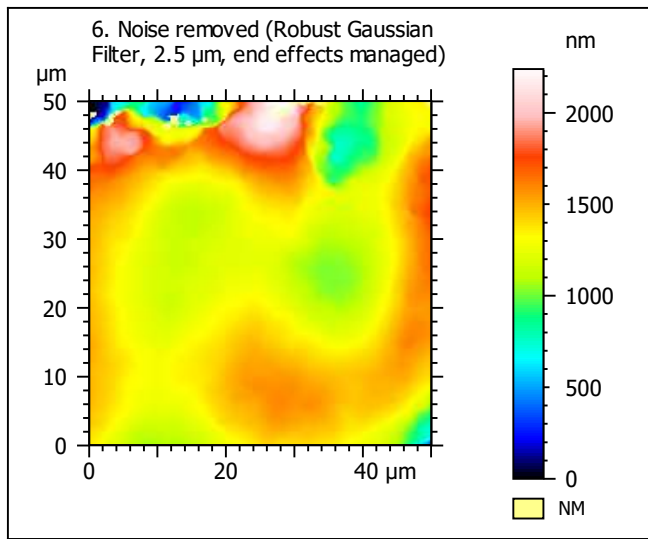
Template to process all extracted 50x50  $\mu\text{m}$  surfaces, acquired with the LEXT 4000 with the 50x/0.95 objective at 1x zoom

## A. Processing



Identity card			
Name:	VSH4-1-Point1b-50-1x-Area1		
File path:	D:\Data\Ant...\VSH4-1-Point1b-50-1x-Area1.sur		
Axis:	X		
Length:	50.0	μm	
Size:	201	points	
Spacing:	0.250	μm	
Axis:	Y		
Length:	50.0	μm	
Size:	201	points	
Spacing:	0.250	μm	
Axis:	Z		
Length:	20550	nm	
Size:	15217	digits	
Spacing:	1.35	nm	
NMP ratio:	0.00 % (0 Pts)		





Identity card			
Name:	VSH4-1-Point1b-50-1x-Area1 > Levelled (Leas...		
Axis:	X		
Length:	50.0	μm	
Size:	201	points	
Spacing:	0.250	μm	
Axis:	Y		
Length:	50.0	μm	
Size:	201	points	
Spacing:	0.250	μm	
Axis:	Z		
Length:	2239	nm	
Size:	1658	digits	
Spacing:	1.35	nm	
NMP ratio:	0.00 % (0 Pts)		

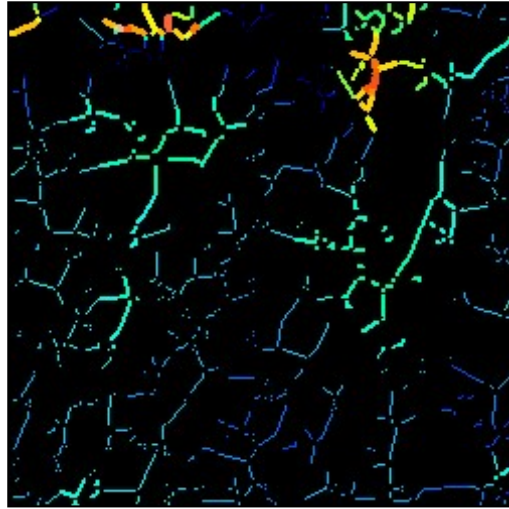
**Analyses:**  
**8. ISO 25178**  
**9. Furrow**  
**10. Texture isotropy and direction**  
**11. SSFA**

## B. Analyses

### 8. ISO 25178-2 parameters on surface #7

ISO 25178		
Height Parameters		
Sq	250	nm
Ssk	-0.365	
Sku	6.84	
Sp	899	nm
Sv	1340	nm
Sz	2239	nm
Sa	177	nm
Functional Parameters		
Smr	69.5	%
Smc	251	nm
Sxp	505	nm
Spatial Parameters		
Sal	5.86	μm
Str	0.692	
Std	129	°
Hybrid Parameters		
Sdq	0.125	
Sdr	0.647	%
Functional Parameters (Volume)		
Vm	0.0202	μm <sup>3</sup> /μm <sup>2</sup>
Vv	0.271	μm <sup>3</sup> /μm <sup>2</sup>
Vmp	0.0202	μm <sup>3</sup> /μm <sup>2</sup>
Vmc	0.166	μm <sup>3</sup> /μm <sup>2</sup>
Vvc	0.238	μm <sup>3</sup> /μm <sup>2</sup>
Vvv	0.0339	μm <sup>3</sup> /μm <sup>2</sup>

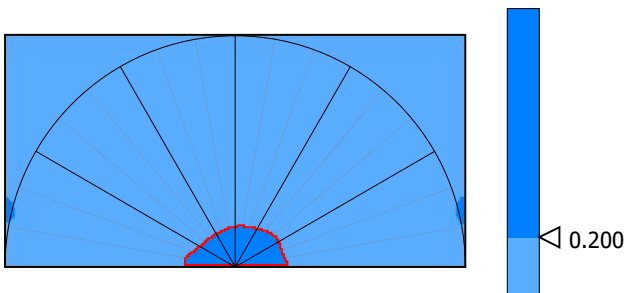
### 9. Furrow analysis surface #7



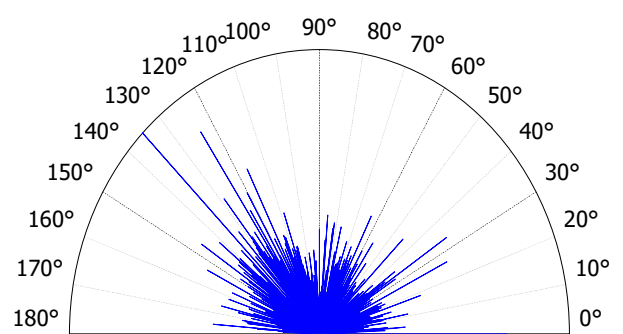
All furrows are shown.

Parameters	Value	Unit
Maximum depth of furrows	513	nm
Mean depth of furrows	158	nm
Mean density of furrows	2142	cm/cm2

### 10. Texture isotropy and direction on surface #7



Parameters	Value	Unit
Isotropy	71.0	%
Periodicity	21.9	%
Period	25.9	μm
Direction of period	166	°



Parameters	Value	Unit
Isotropy	69.2	%
First Direction	135	°
Second Direction	124	°
Third Direction	0.245	°

